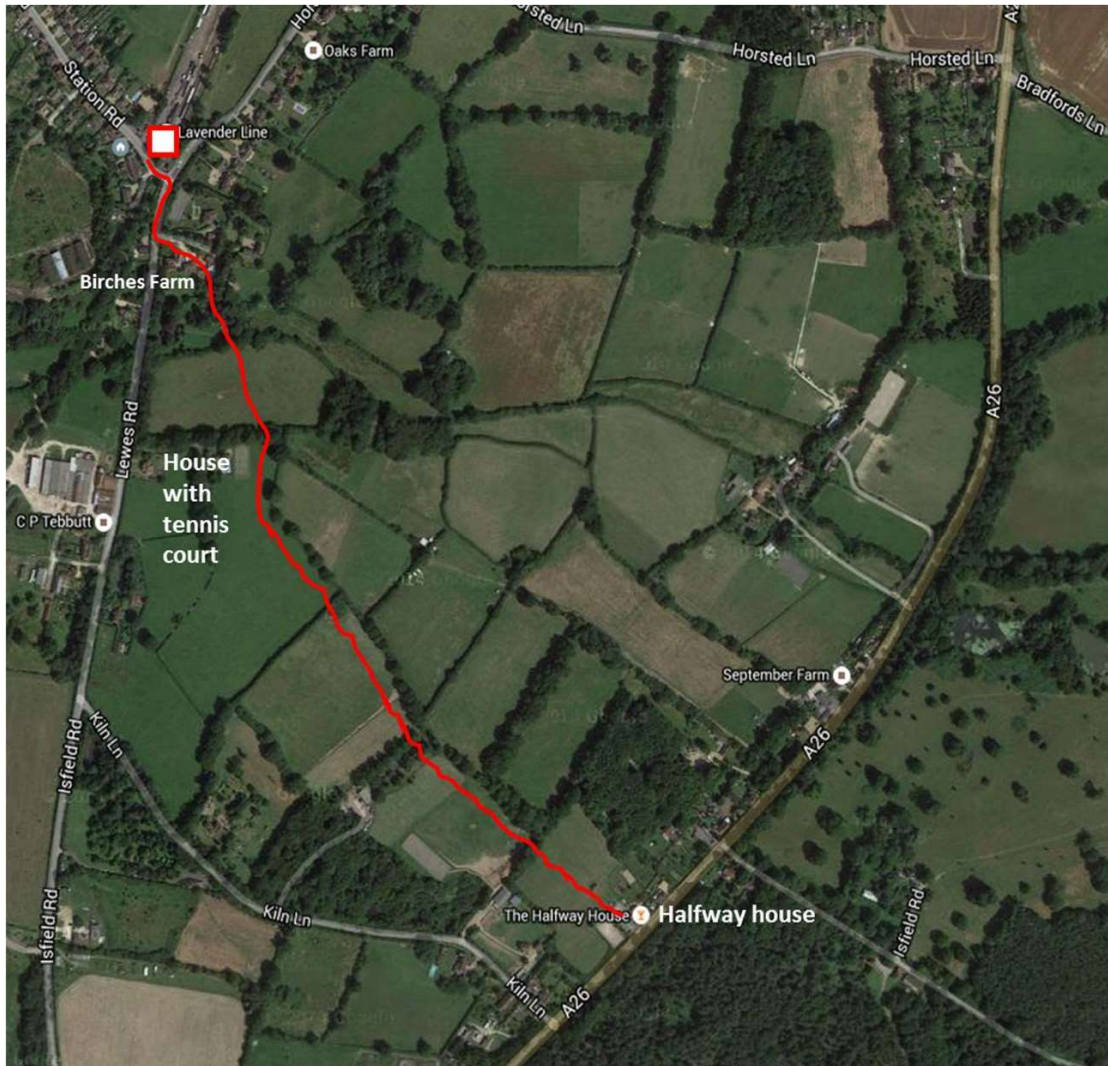


Walk to the Half Way House Pub. Rose Hill. *Approx 15minutes*



1. From the Laughing Fish left and across the railway crossing and turning left toward Lewes.
2. Walk approx. 30m turn left down a track at Birches Farm. Walk down the track between the two houses.
3. Veer to the right keeping Birches Farm gardens on your right
4. At the end of the track take the stile in front of you
5. Walk straight across the field to the stile
6. Continue straight through into the next field—keep parallel to the hedging to your left, a large house with tennis courts on the far right.
7. Continue walking through gateway/stiles into the next fields and turn left following the hedges. The last field with horse fencing on your right
8. At the end go through the stile and across the field to the Half Way House. Stop and have a drink!
9. Return the same way although it is difficult to see the gate across the field from the pub

